



Taymount Rise, SE23 | £550,000

02087029444

[foresthill@pedderproperty.com](mailto:foresthill@pedderproperty.com)

**pedder**  
We live local





## In General

- Chain-free
- Spacious reception/dining room
- Three bedrooms
- Modern fitted kitchen
- Two bathroom suites
- Communal garden & allotment
- 0.4 miles to Forest Hill station
- Stripped wooden flooring
- Telephone entry system
- Abundance of light

## In Detail

A beautiful three bedroom ground floor apartment for sale in Taymount Grange, an immaculately maintained 1930s art deco mansion block designed by architect George Bertram Carter. Offered chain free.

This charming apartment is set over 1,100 Sq Ft and comprises a spacious reception/dining room, separate modern fitted kitchen, two bathroom suites and three double bedrooms. Further benefits of the block include a telephone entry system, secure bike storage area, live-in caretaker, an immaculately kept communal garden with allotments for residents, a built-in brick barbecue, stripped wooden flooring, and so much more. The property is flooded with natural light and enjoys wonderful views across South East London and Kent from the original 1930s Crittall windows.

Situated at the end of a quiet leafy cul-de-sac, the property is located approximately 0.4 miles from Forest Hill station offering excellent transport links into London Bridge, Victoria, Canada Water, Shoreditch, Whitechapel, Highbury & Islington and many other locations. It is also just a short walk to various local amenities including a variety of restaurants, coffee shops, cafes and gastro pubs and the wonderful Horniman Museum & Gardens.

Viewings are highly recommended, call the Pedder Forest Hill sales team to arrange a viewing today.

EPC: C | Council Tax Band: A | Lease: 106 years remaining | SC: £TBC | GR: £100 pa | BI: Incl. in SC

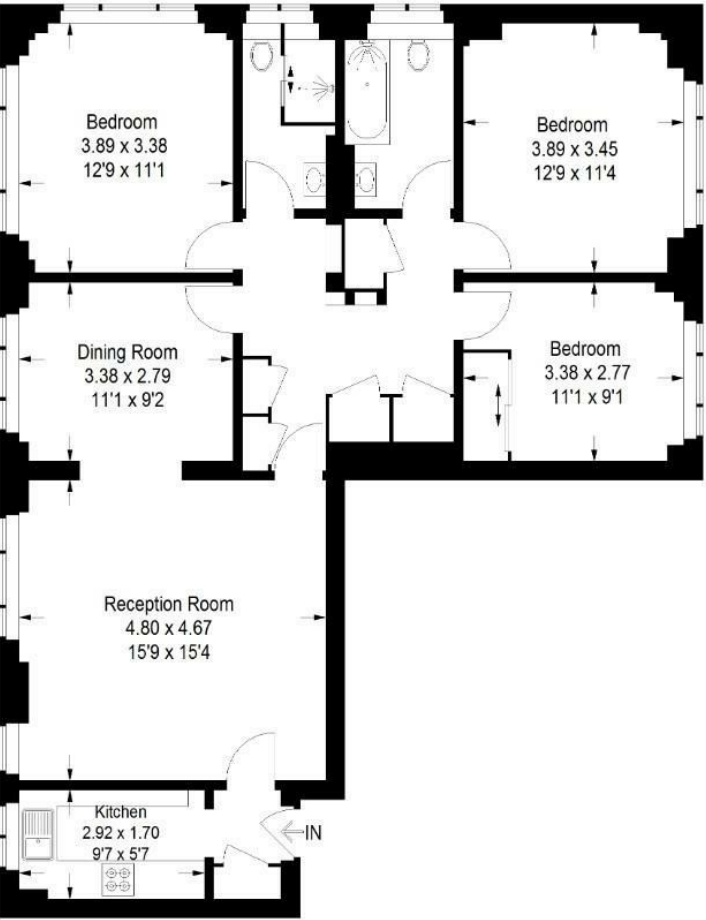




# Floorplan

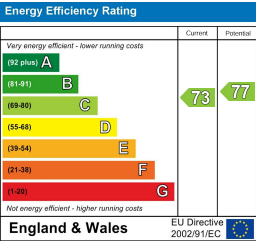
## Taymount Grange, SE23

Approximate Gross Internal Area  
103.0 sq m / 1109 sq ft



### Ground Floor

Copyright www.pedderproperty.com © 2025  
These plans are for representation purposes only as defined by RICS - Code of Measuring Practice. Not drawn to Scale. Windows and door openings are approximate. Please check all dimensions, shapes and compass bearings before making any decisions reliant upon them.



Pedder Property Ltd trading as Pedder for themselves and for the vendor/landlord of this property whose agents they are, give notice that (1) these particulars do not constitute any part of an offer or contract, (2) all statements contained within these particulars are made without responsibility on the part of Pedder or the vendor/landlord, (3) whilst made in good faith, none of the statements contained within these particulars are to be relied upon as a statement of representation or fact, (4) any intending purchaser/tenant must satisfy him/herself by inspection or otherwise as to the correctness of each of the statements contained within these particulars, (5) the vendor/landlord does not make or give either Pedder or any person in their employment any authority to make or give representation or warranty whatsoever in relation to this property.